

# Lenovo X3



**FAST FINGERPRINT**



**CONVENIENT HANDLE**



**4.5" LARGE SCREEN**



**HIGH BATTERY LIFE**



digitallock



**3 YEARS LOCAL WARRANTY**

**INSTALLATION BY CERTIFIED INSTALLER**

**YOUR DIGITAL LOCK SPECIALIST**



- 4.5-inch large screen cat eye, ultra-clear view
- Aluminum alloy painted panel, ten years as new
- Handle front and rear double clutch, easy and smooth
- Imported chip plus motor, high quality

Phantom Black



digitallock



**AUTOMATIC**  
Pull the handle automatically lock. Safe and unworried.



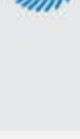
**ENCRPT**  
Full-link data encryption to effectively protect user privacy.



**FIRM**  
Anti-Prying and anti-violent disassembly + C-class straight insert, strong resistance.



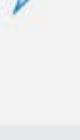
**DESIGN**  
The straight plate is designed with the arc edge, which is simple but not dull.



**UPGRADE**  
Semiconductor human fingerprint recognition, unlocking speed is as fast as lightning.



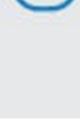
**SAFE**  
17 layers of safety protection, safe home saves your heart and energy.



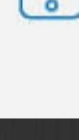
**FAST**  
A variety of unlocking methods to cope with life, simple and fast. Close the door and go.



**SMART**  
In addition to unlocking, there are a lot of functions. Support Password Management, Inquiry etc.



**SENSITIVE**  
Touch to unlock, multiple sensors work together smart security alerts.



**INTIMATE**  
Remote Passcode, Virtual Passcode. Intelligent equipment linkage, create an intimate smart home.

digitallock

## UNLOCKING METHODS



## ULTRA-CLEAR BIG SCREEN CAT EYE 4.5 INCH SCREEN

Cat eye capture; remote cat eye, the security situation outside the door is clear at a glance



## REAL HUMAN FINGERPRINT RECOGNITION FAST AS LIGHTNING

Enter more fingerprint features at one time; double optimized algorithm, each recognition will supplement the owner's fingerprint information, constantly improve the fingerprint information, unlock faster and faster. Support multi-angle fast identification.

Note: Please lift your finger every time you enter the fingerprint feature, and use different angles to enter, so as to maximize the fingerprint information and get the best unlocking experience.



## LOW POWER CONSUMPTION HIGH BATTERY LIFE

4000mAh lithium battery can last 6 months under normal use. Even if there is no power, it can be charged urgently with the emergency USB interface, power is always guaranteed.

\* After the door lock is connected to the network through wifi, the door lock battery life will fluctuate according to the specific network and usage

## FULLY AUTOMATIC PANEL + ALUMINUM ALLOY

Made of aluminum alloy, strong and durable, it can still maintain excellent reliability after long-term work. The motor in the lock drives the deadbolt, push and pull when entry and exit, convenient and fast

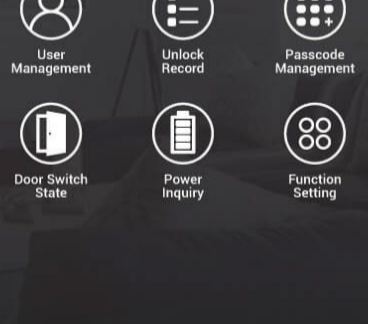


## DETAILS SHOW QUALITY, FINANCIAL GRADE ENCRYPTION CHIP

Protect your sensitive information from leakage, use financial-grade hardware encryption chips to isolate your fingerprint information from the outside world. Every unlock is digitally certified for financial-grade privacy.



## CHECK LOCK INFORMATION ANY TIME TUYA MOBILE APPS



## FOR THE SAFETY OF THE FAMILY MULTIPLE PROTECTIONS



## BREAKING THE PRIVACY PROBLEM FULLY ENCRYPTED

Lenovo pays attention to and has the ability to provide users with better data protection, and provides full-link encryption capabilities to achieve effective encryption of communication content. While users enjoy the smart and trendy life, it strongly resists hackers from prying into personal privacy.

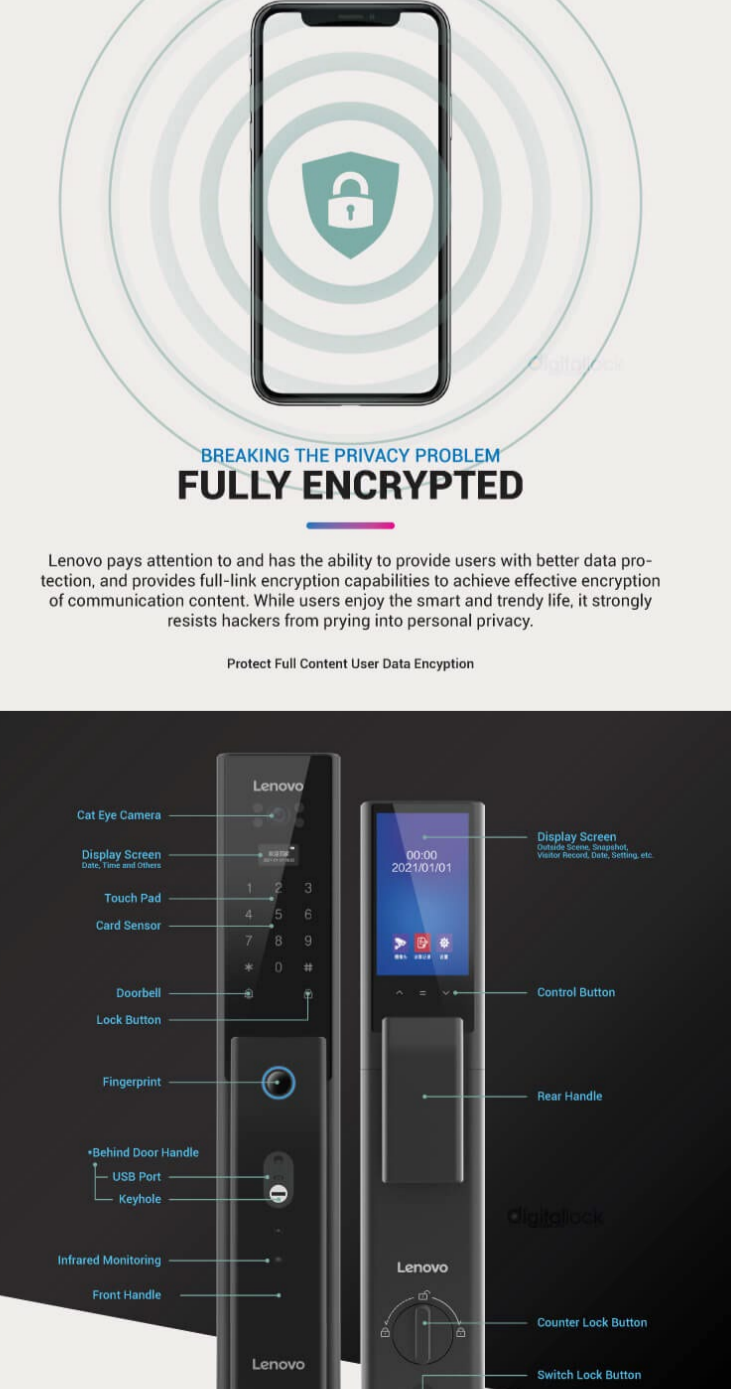
Protect Full Content User Data Encryption

## IoT SECURITY UPGRADING EXPERIENCE LENOVO SECURITY LAB

Lenovo and the National Internet Emergency Center established a joint security laboratory earlier, bringing the security of IoT devices into a higher dimension.



Before the product goes on the market, it will go through 8 safety audit processes, strictly control each link, and ensure that the product passes the laboratory safety certification.



## PRODUCT PARAMETERS

Product	Lenovo Smart Door Lock X3	digitallock
Product Contains	Outer Panel x 1, Inner Panel x 1 / Emergency Key x 2 / Door Card x 2, Installation Kit x 1 / User Manual x 1	
Unlock Method	Conventional Virtual Password / Temporary Password / Dynamic Password / Mechanical Key / Inductive Door Card	
Dimension	Outer Panel : 400 x 75.6 x 20mm / Inner Panel : 400 x 75.6 x 30mm	
Main Material	Aluminum Alloy	
Appearance	Baking Paint	
Password Length	6 bits (up to 32 digits for Virtual Password)	
Emergency Power Supply	External power port (Micro USB)	
Standby Time	6 months : in order to ensure the quality of battery life, please charge it for the first time after installation	
Operating Temperature	-25° ~ 70° C	
Unlock Capacity	Fingerprint / Passcode / Card : Total 250	
Mechanical Key	X2 Class C	
Main Power	7.4V 4000mAh Lithium Battery	
Color	Phantom Black	
Way of Communication	WiFi 2.4G	



**EAGLE SECURE TECH SDN BHD (M10435-K)**  
 No 5, Jalan PJU 5/9, Dataran Sunway, Kota Damansara, 47810 Petaling Jaya, Selangor.  
 sales@eagle-securetech.com | www.eagle-securetech.com | www.digitallock.com.my  
 Hotline: 1700 81 65 84 | +6016 600 7171 | +6016 622 7171 | +6011 3310 3130 | +6012 222 1108